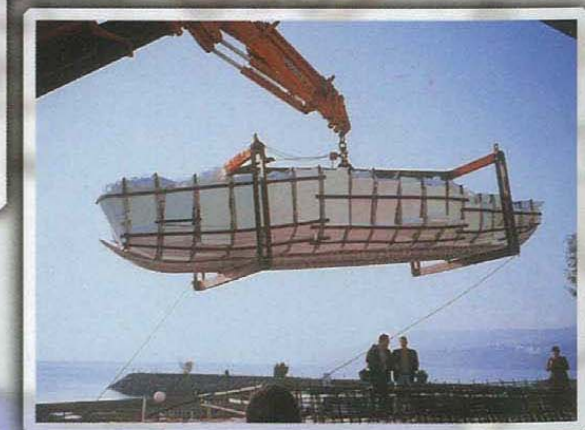
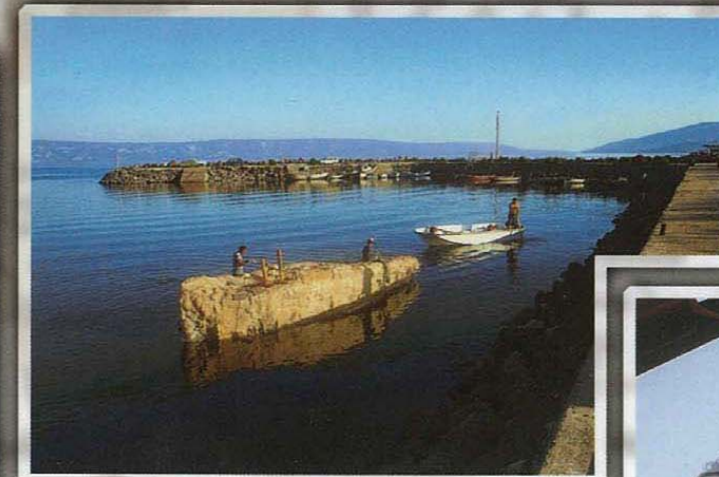
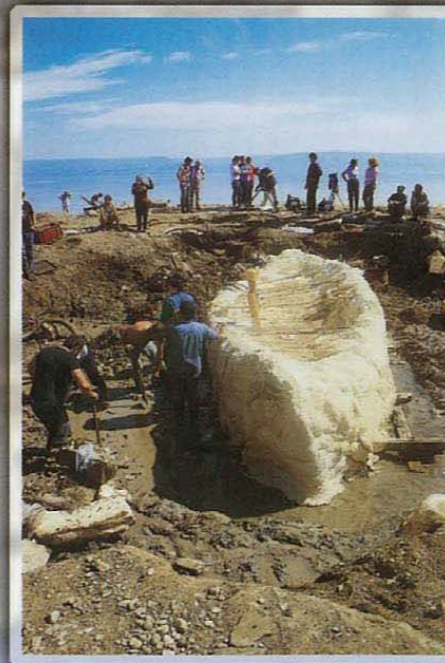


The Ancient Galilee Boat

From the time of Jesus



The discovery in 1986 of this ancient vessel, mired in the mud near Magdala on the northwest shore of the Sea of Galilee, caused a stir throughout the world, especially after it was conclusively dated to the fateful first century A.D., the time of Jesus and of the Great Revolt of the Jews against the Romans. The boat, made primarily of cedar and oak, is now on exhibit at Kibbutz Ginnosar. It is 9 meters long, 2.5 meters wide, and 1.25 meters high. It may have functioned as a ferry boat, but its measurements also suit use by ancient fishermen employing a seine, or dragnet, "cast into the sea" as described in Matthew 13:47-48.



The Yigal Allon Center
Kibbutz Ginosar 14980 Israel